


Zerona Non-Invasive Fat Loss Procedure

Zerona Z6 is a low-level laser used to target problematic areas of stored fat. Most clients who undergo the Zerona process focus on their waist, thighs and hips, but it can also be used on various other problem areas such as the arms, neck, ankles, chest and back due to it's clearance to treat the overall body.

The procedure is straightforward and causes no side effects. Your Zerona provider will have you lie on a comfortable table on your back. Six lasers will be applied to target areas of fat simultaneously for approximately 20 minutes. You'll then lie on your front, where the process will be repeated. By undergoing this 40-minute procedure as few as 6 times, you can see quality results in fat loss.



SCARLESS | NO SIDE-EFFECTS | NON-INVASIVE



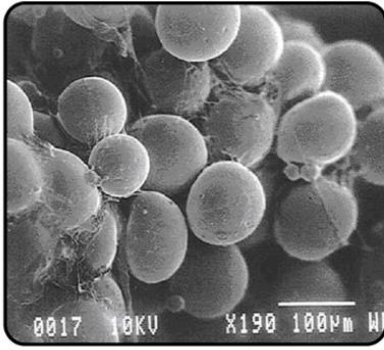
How Zerona Works

The technology employed by the Zerona Z6 laser was initially developed as an adjunct to liposuction procedures to help speed up the recovery process. However, it was found that these cold laser treatments could be used as a stand-alone procedure that promoted the liberation of stored intracellular fat.

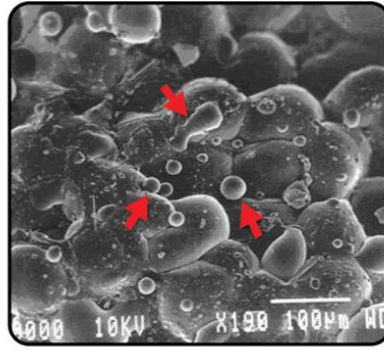
Zerona utilizes cold laser treatment, also called low-level laser technology (LLLT). This “cold” laser technique uses low levels of light that are not enough to heat your body’s tissue.

When it’s used cosmetically to target fat cells, the Zerona procedure creates an overall body slimming effect that can be used to reduce fat in your: Waist, Chest, Pecs, Back, Neck, Arms, Thighs, Hips, Ankles, and more!

The Zerona Z6 laser uses low-level laser stimulation to disrupt the membrane of fat cells. This disruption induces the formation of a transitory pore that causes the fatty material of the cell to seep out and move into the interstitial space regulated by the lymphatic system. The result is that fat cells within adipose tissue are **shrunk instead of being killed**, which can be harmful to the integrity of bodily tissue.

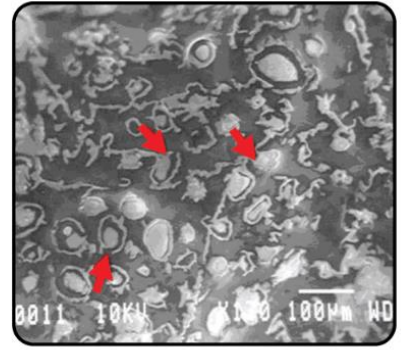


FAT CELLS BEFORE TREATMENT



FAT CELLS DURING TREATMENT

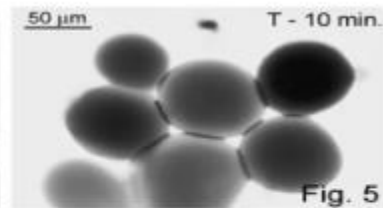
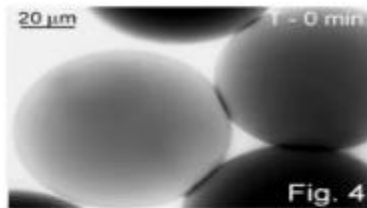
During the laser treatment, the fat cells begin to expell the fat.



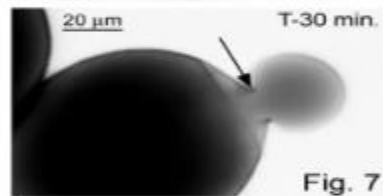
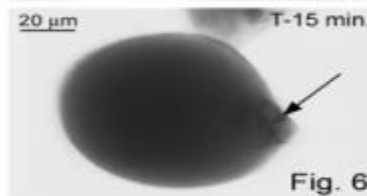
The fat is then absorbed in to the lymphatic system where is it taken to gut for excretion and elimination.

THE EFFECT OF PHOTOPOROSIS

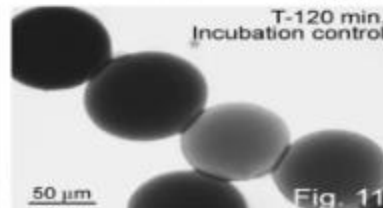
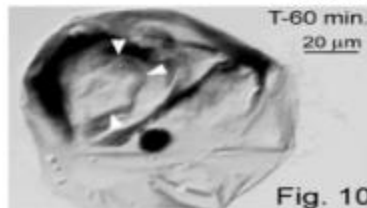
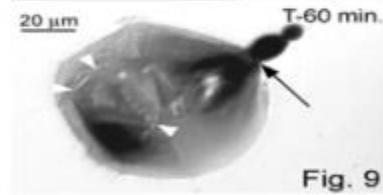
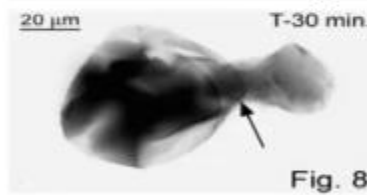
The laser induces a transitory pore.

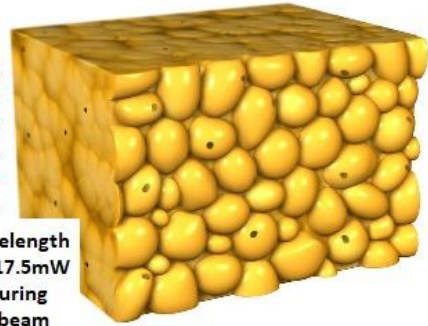
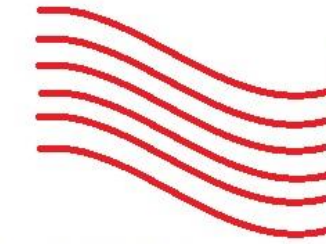


The pore causes triglycerides and fatty material to seep out.

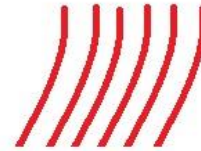


The fat cell collapse and shrinks in size.

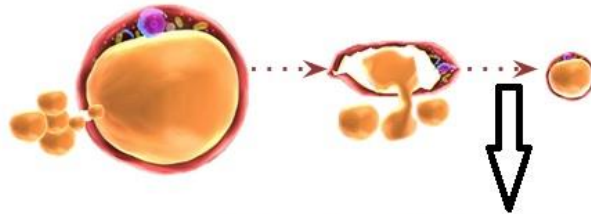




5 oscillating LASER beams at a wavelength of 635nm and a power output of 17.5mW wash over the treatment area ensuring every square inch is covered. The beam penetrates 3 inches deep into the tissue ensuring every cell layer is affected.



The special wavelength causes the fat inside the cells to reach a higher viscosity or liquification, at the same time the process causes pores inside the fat cell to open allowing the fat to be expelled from the cell.



The end result is a thinner, healthier layer of fat leaving the fat cells intact but smaller. So no surgery, no downtime, just easy!

The fat is then taken in to the lymphatic draining system and transported away from the cells and expelled from the body.

